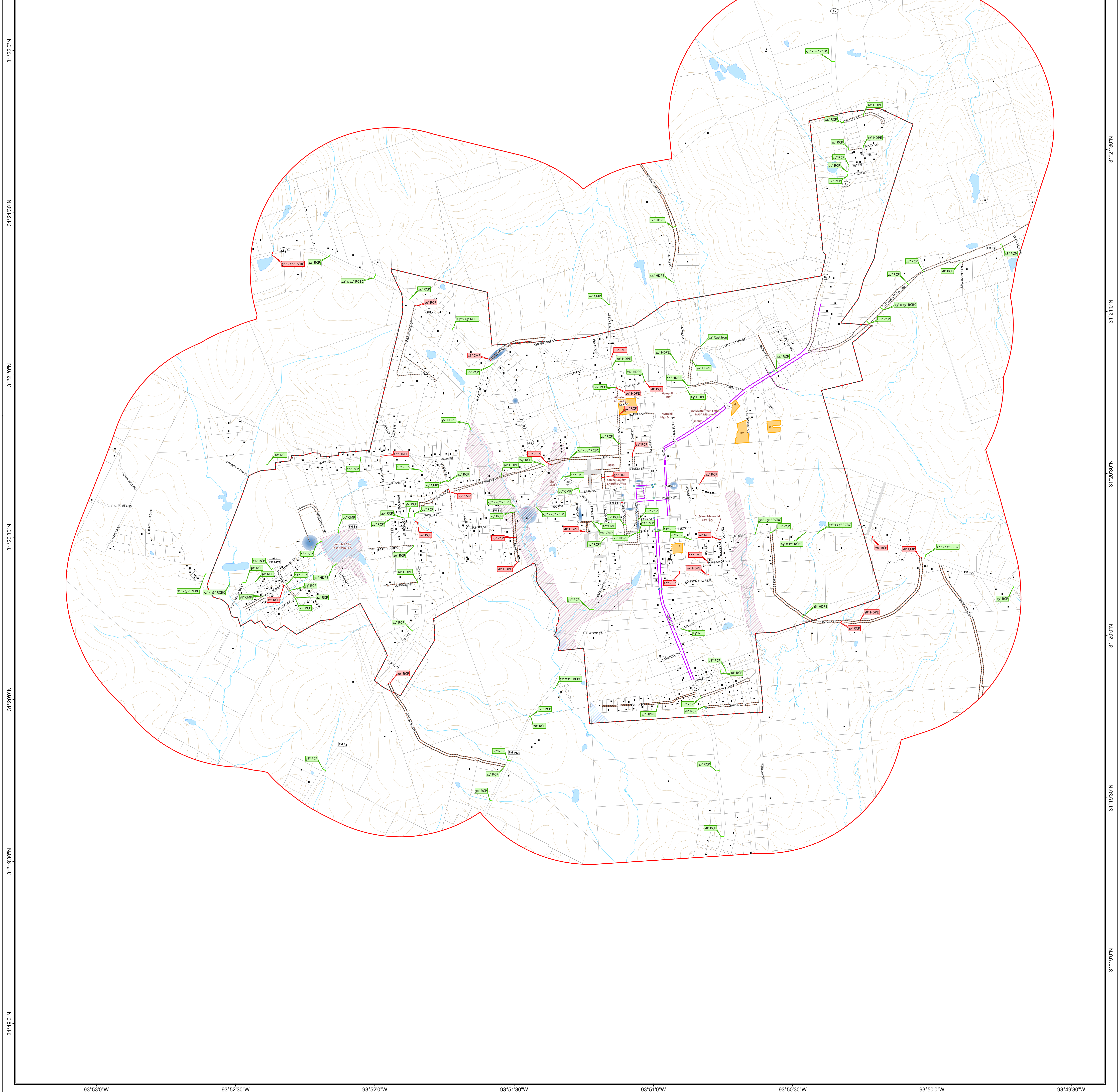


93°53'0"W 93°52'30"W 93°52'0"W 93°51'30"W 93°51'0"W 93°50'30"W 93°50'0"W 93°49'30"W

City Limits	Storm Sewer Inlet	Drainage Channel
Extraterritorial Jurisdiction	Inlet Type, Condition	Channel Type, Condition
House	Area Inlet, Damaged	Natural Lined Channel, Not Maintained
Parcels	Area Inlet, Not Damaged	Roadside Ditch Channel, Maintained
Multifamily Complex	Curb Inlet, Not Damaged	Roadside Ditch Channel, Not Maintained
[Label: Total Units]	Culvert	Problem Drainage Area
Unbuilt Right of Way	[Label: (Number of Pipes) Size & Type*]	
Bridge	Not Damaged	
Stream	Damaged	
Lake or Pond	Curb and Gutter	
FEMA 100 Year Special Flood Hazard Area**	Condition	
Hemphill 1976 Floodplain**	Not Damaged	
USGS Contours	Damaged	
[Label: Elevation (feet)]		

*Abbreviations of culvert material: CMP = Corrugated Metal Pipe;
 HDPE = High Density Polyethylene; RCB = Reinforced Concrete
 Block Culvert; RCP = Reinforced Concrete Pipe
 **There are no FEMA issue maps for the unincorporated areas of Sabine County, Texas

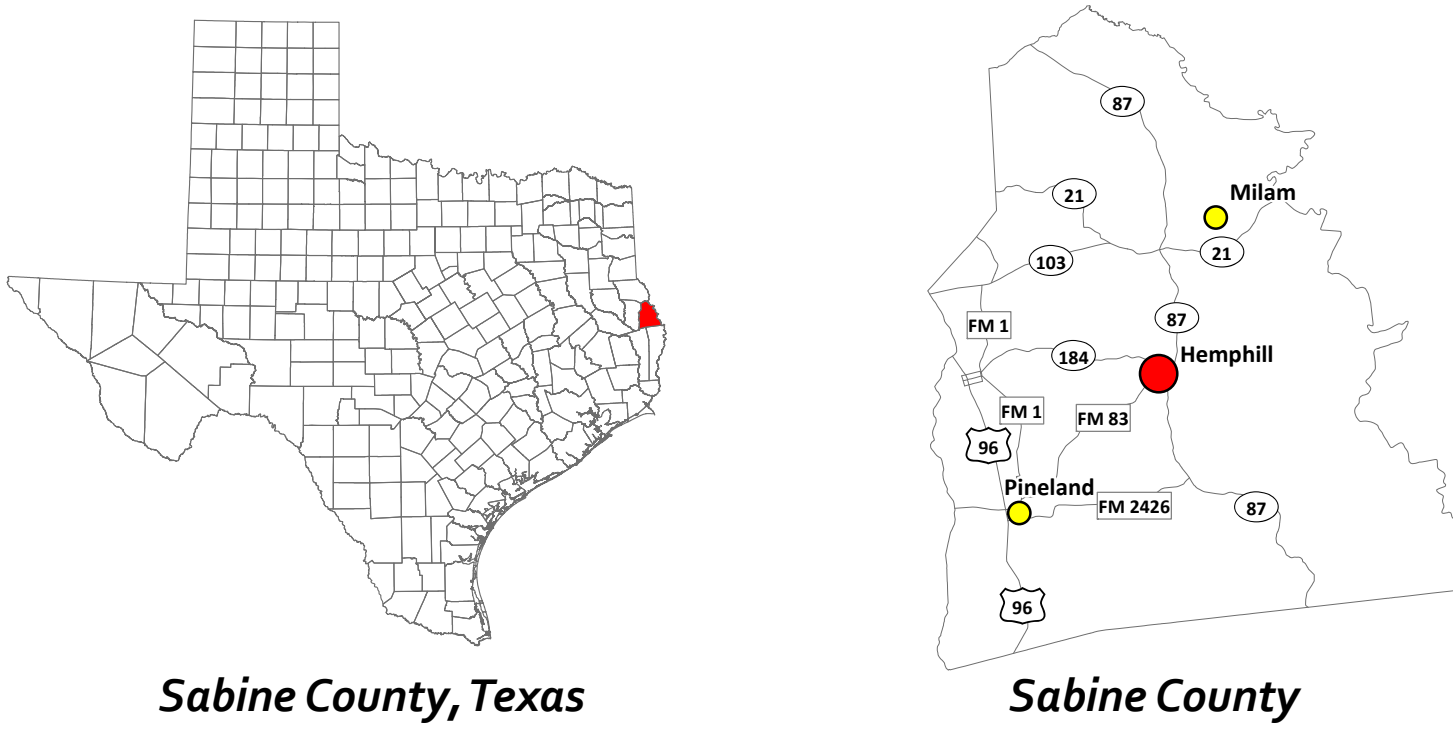


93°53'0"W 93°52'30"W 93°52'0"W 93°51'30"W 93°51'0"W 93°50'30"W 93°50'0"W 93°49'30"W

GrantWorks
 GrantWorks, Inc.
 2201 Northland Drive, Austin, TX 78756
 Phone (512) 420-0303 Fax (512) 420-0302

FINANCED THROUGH THE TEXAS DEPARTMENT OF AGRICULTURE.
 Preparation of this document was financed through provisions of a
 Texas Community Development Block Grant from the U.S. Department of
 Housing and Urban Development.

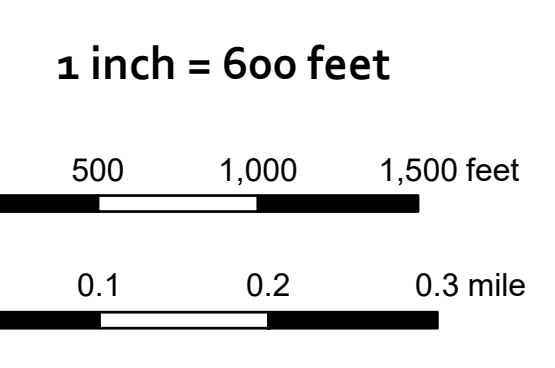
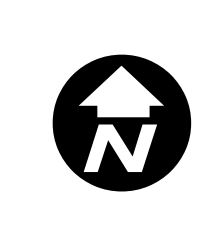
This illustration was created using the best available data. Subsequent
 additions, edits, & georectification performed by Grantworks, Inc.



City of Hemphill
 Sabine County, Texas

Map 5A
 Existing Storm Drainage Conditions

June - 2023



Texas State Plane Zone 3
 Texas Central
 Projection: Lambert Conformal Conic
 GCS North American 1983
 Datum: D North American 1983

Disclaimer
 The maps and documents included in this planning study are to be used for
 comprehensive planning purposes only as reference material provided for
 laypersons, whether they are public officials or members of the general public.
 Recommendations for infrastructure improvements in this study, which are
 derived from engineering studies, or project cost estimates prepared by an
 engineer, are cited as such. Under no circumstances should material
 contained within this study regarding improvements to the City's infrastructure
 be construed as a detailed engineering plan, specification, engineering design,
 or any other type of document intended for the purpose of specific public
 work construction. The municipality and/or governing agency is responsible
 for obtaining the services of a licensed professional engineer to perform
 engineering design services for the construction of public works projects
 as required by the Texas Engineering Practice Act.

The lot, right-of-way, corporate and extraterritorial jurisdiction boundaries
 depicted on these maps were derived from readily available information such
 as existing corporate maps, census maps, or plat maps from the County
 Clerk or Appraisal District and are representational in nature. Locations and
 characterizations of infrastructure, facilities, and structures depicted on these
 maps are approximate. The City and GrantWorks, Inc. do not intend to
 establish or confirm true and legal boundaries or exact locations of physical
 objects with these maps and do not warrant or approve the use of these maps
 for any purpose other than general reference and information.

31°22'30"N 31°22'00"N 31°21'30"N 31°21'00"N 31°20'30"N 31°20'00"N 31°19'30"N 31°19'00"N